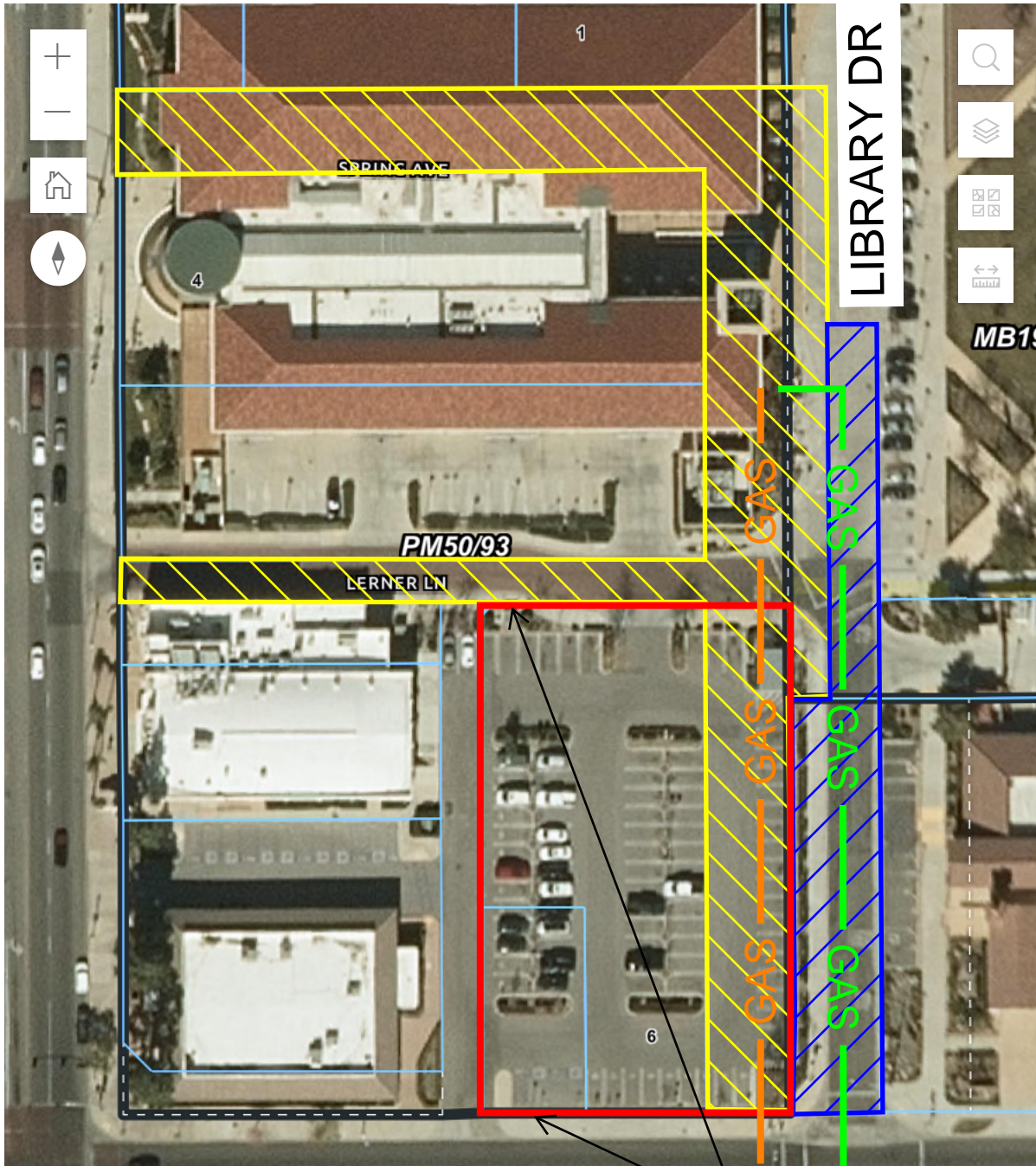


SIERRA AVE

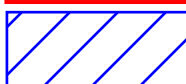


ARROW BLVD

PROPOSED PARKING  
STRUCTURE



FUTURE PARKING STRUCTURE



PROPOSED DECLARATION FOR STREET AND  
HIGHWAY PURPOSES ALONG LIBRARY DR



CURRENT ROADWAY DEDICATION FOR  
WHEELER AND LERNER AVENUES

— GAS —

EXISTING GAS MAIN UNDER FUTURE  
PARKING STRUCTURE TO BE REMOVED

— GAS —

REALIGNED GAS MAIN UNDER LIBRARY DR