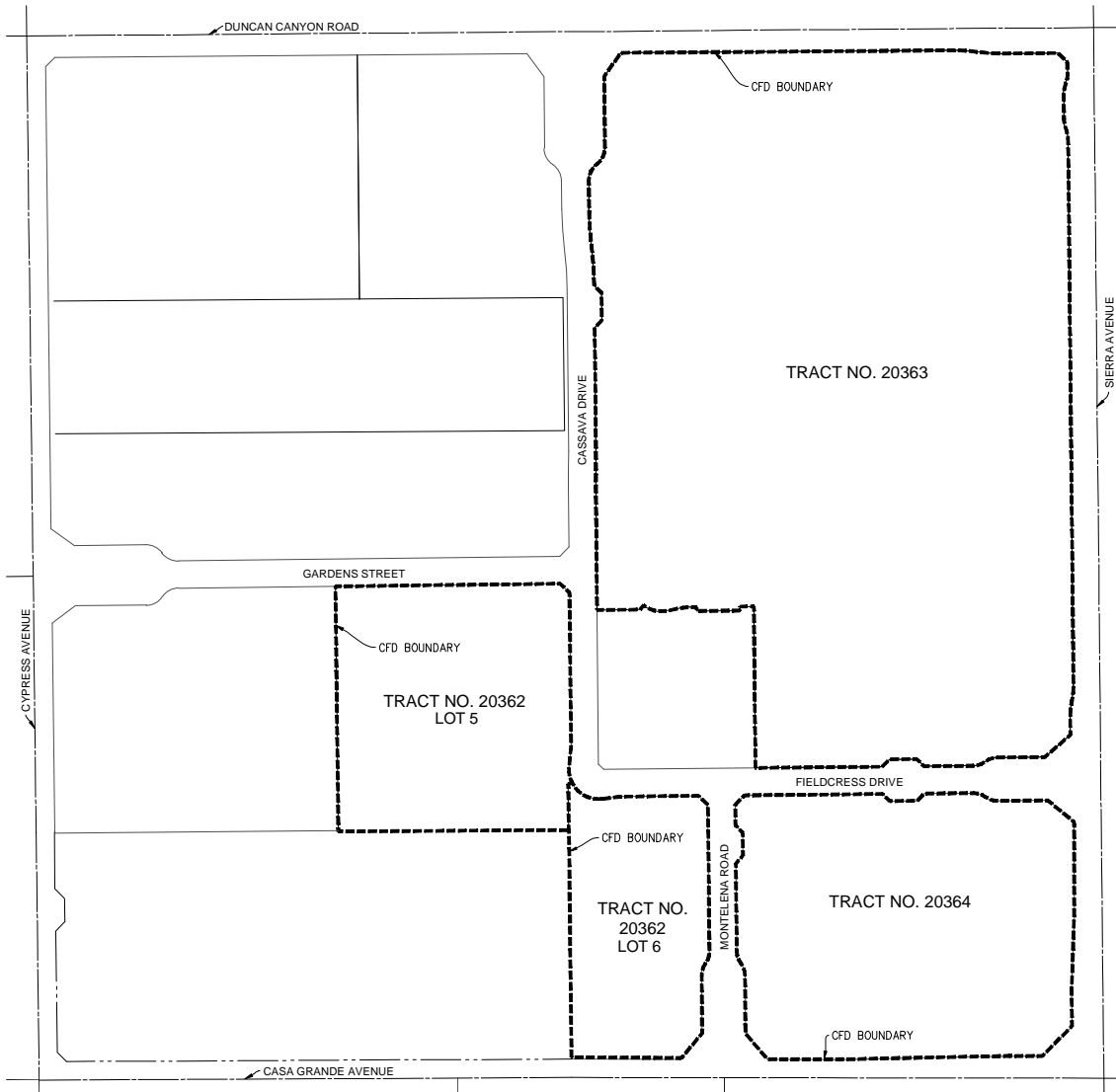


PROPOSED BOUNDARIES OF CITY OF FONTANA COMMUNITY FACILITIES DISTRICT NO. 112
(THE GARDENS PHASE ONE)
COUNTY OF SAN BERNARDINO, STATE OF CALIFORNIA



LEGAL DESCRIPTION:

THE PROPOSED BOUNDARIES OF CITY OF FONTANA COMMUNITY FACILITIES DISTRICT NO. 112 (THE GARDENS PHASE ONE) CONTAINS 69.97 ACRES OF LAND, MORE OR LESS.

REFERENCE IS HEREBY MADE TO TRACT NO. 20362 FILED IN BOOK 362 OF TRACT MAPS AT PAGES 78 THROUGH 84 (RECORDED AS DOCUMENT NO. 2022-0128605), TRACT NO. 20363 FILED IN BOOK 363 OF TRACT MAPS AT PAGES 58 THROUGH 66 (RECORDED AS DOCUMENT NO. 2022-0259528), AND TRACT NO. 20364 FILED IN BOOK 363 OF TRACT MAPS AT PAGES 67 THROUGH 71 (RECORDED AS DOCUMENT NO. 2022-0259529), IN THE OFFICE OF THE COUNTY RECORDER OF THE COUNTY OF SAN BERNARDINO, STATE OF CALIFORNIA, FOR A DESCRIPTION OF THE LINES AND DIMENSION OF THE LOTS INCLUDED HEREON.

THE PROPOSED BOUNDARIES OF CITY OF FONTANA COMMUNITY FACILITIES DISTRICT NO. 112 (THE GARDENS PHASE ONE) CONTAINS LOT 5 AND LOT 6 OF TRACT NO. 20362, ALL OF TRACT NO. 20363, AND ALL OF TRACT NO. 20364.

BASIS OF BEARINGS

THE EASTERLY LINE OF SECTION 19, ALSO BEING THE CENTERLINE OF SIERRA AVENUE BEING: N00°33'32"W PER TRACT MAP NO. 20153, M.B. 352/17-25.

CITY CLERK'S CERTIFICATE:

FILED IN THE OFFICE OF THE CITY CLERK OF THE CITY OF FONTANA THIS _____ DAY OF _____, 2023.

CITY CLERK, CITY OF FONTANA

I HEREBY CERTIFY THAT THE WITHIN MAP SHOWING THE PROPOSED BOUNDARIES OF CITY OF FONTANA COMMUNITY FACILITIES DISTRICT NO. 112 (THE GARDENS PHASE ONE), COUNTY OF SAN BERNARDINO, STATE OF CALIFORNIA, WAS APPROVED BY THE CITY COUNCIL OF THE CITY OF FONTANA AT A REGULAR MEETING THEREOF, HELD ON THE _____ DAY OF _____, 2023, BY ITS RESOLUTION NO. _____

CITY CLERK, CITY OF FONTANA

SAN BERNARDINO COUNTY RECORDER'S CERTIFICATE:

THIS MAP HAS BEEN FILED UNDER DOCUMENT NUMBER _____, THIS _____ DAY OF _____, 2023, AT _____ M, IN BOOK _____ OF _____ AT PAGE _____, AT THE REQUEST OF THE CITY OF FONTANA IN THE AMOUNT OF \$ _____

CHRIS WILHITE
ASSESSOR-RECORDER-COUNTY CLERK
SAN BERNARDINO COUNTY

BY: _____
DEPUTY RECORDER



PROPOSED BOUNDARIES OF CITY OF FONTANA
COMMUNITY FACILITIES DISTRICT NO. 112
(THE GARDENS PHASE ONE)

PREPARED BY:
K&A
ENGINEERING
LAND PLANNING
SURVEYING
357 N. SHERIDAN STREET
SUITE 117
CORONA, CALIFORNIA 92878
TEL. (951) 279-1800
FAX (951) 279-4380
Engineering, Inc.

SHEET
1 OF 1