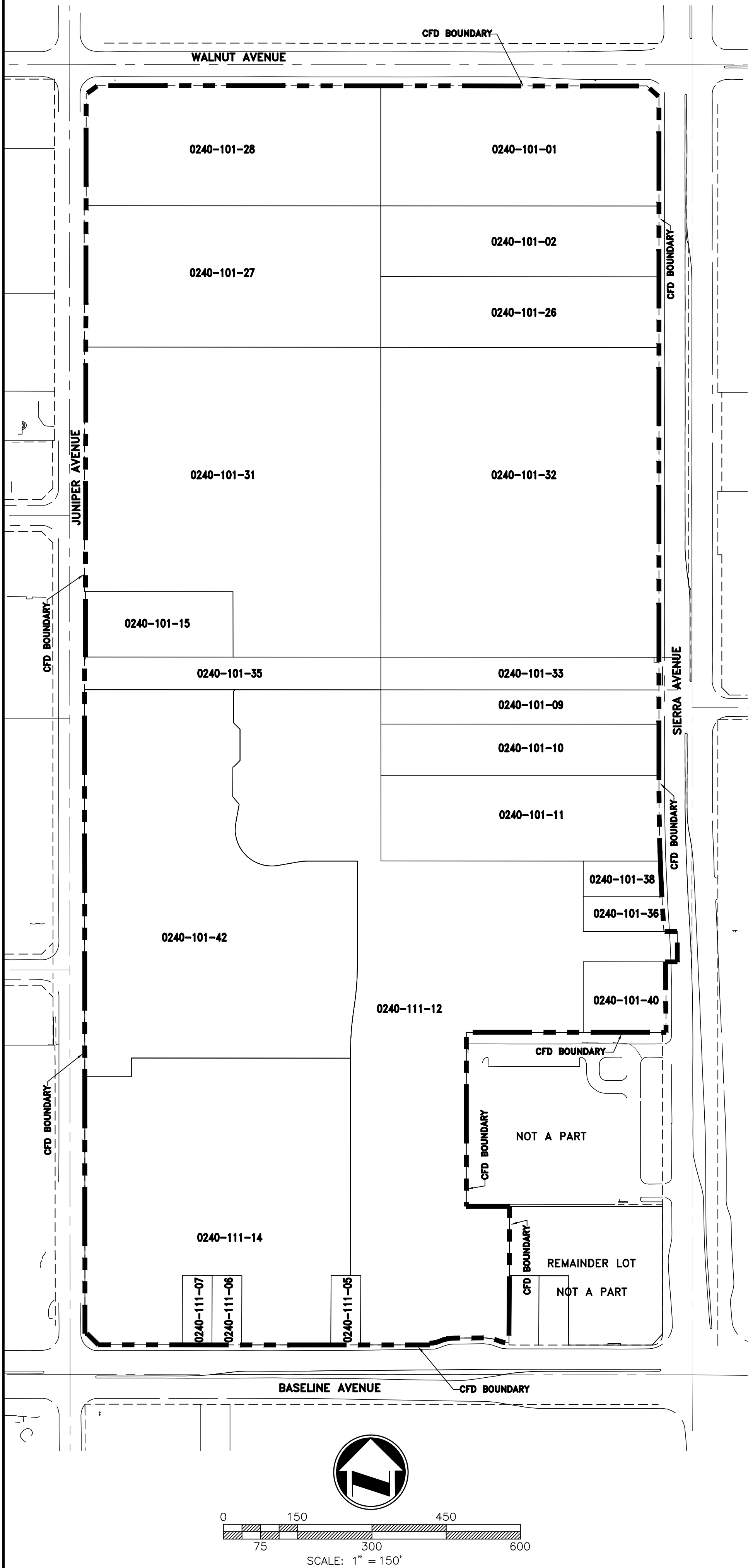


PROPOSED BOUNDARIES OF CITY OF FONTANA
COMMUNITY FACILITIES DISTRICT NO. 80 (BELLA STRADA)

COUNTY OF SAN BERNARDINO, STATE OF CALIFORNIA



BASIS OF BEARING

THE CENTERLINE OF SIERRA AVENUE BEING NORTH 00°00'00" EAST PER TRACT NO. 16572, MB 304/38-44 WAS HELD AS THE BASIS OF BEARINGS FOR THIS MAP.

PROPOSED BOUNDARIES:

THE PROPOSED BOUNDARIES OF CITY OF FONTANA COMMUNITY FACILITIES DISTRICT NO. 80 (BELLA STRADA) CONTAINS 62.7 ACRES OF LAND, MORE OR LESS.

REFERENCE IS HEREBY MADE TO THE ASSESSOR MAPS OF THE COUNTY OF SAN BERNARDINO FOR A DESCRIPTION OF THE LINES AND DIMENSIONS OF THE PARCELS LISTED BELOW:

0240-101-01, 0240-101-02, 0240-101-09, 0240-101-10, 0240-101-11, 0240-101-15, 0240-101-26, 0240-101-27, 0240-101-28, 0240-101-31, 0240-101-32, 0240-101-33, 0240-101-35, 0240-101-36, 0240-101-38, 0240-101-40, 0240-101-42, 0240-111-05, 0240-111-06, 0240-111-07, 0240-111-12, 0240-111-14

CITY CLERK'S CERTIFICATE

FILED IN THE OFFICES OF THE CITY CLERK OF THE CITY OF FONTANA THIS ____ DAY OF ____, 2015.

CITY CLERK OF THE CITY OF FONTANA

I HEREBY CERTIFY THAT THE WITHIN MAP SHOWING THE PROPOSED BOUNDARIES OF CITY OF FONTANA COMMUNITY FACILITIES DISTRICT No. 80 (BELLA STRADA), COUNTY OF SAN BERNARDINO, STATE OF CALIFORNIA, WAS APPROVED BY THE CITY COUNCIL OF THE CITY OF FONTANA AT A REGULAR MEETING THEREOF, HELD ON THE ____ DAY OF ____, 2015, BY ITS RESOLUTION NO. ____.

CITY CLERK OF THE CITY OF FONTANA

SAN BERNARDINO COUNTY
RECORDER'S CERTIFICATE

FILED THIS ____ DAY OF ____, 2015, AT THE HOUR OF ____ O'CLOCK ____M. IN BOOK ____ OF MAPS OF ASSESSMENT AND COMMUNITY FACILITIES DISTRICTS AT PAGE ____, AND UNDER DOCUMENT NUMBER ____, IN THE OFFICE OF THE COUNTY RECORDER IN THE COUNTY OF SAN BERNARDINO, STATE OF CALIFORNIA, AT THE REQUEST OF THE CITY OF FONTANA, IN THE AMOUNT OF \$_____.

BOB DUTTON , ASSESSOR-RECORDER
COUNTY OF SAN BERNARDINO

BY: _____
DEPUTY RECORDER