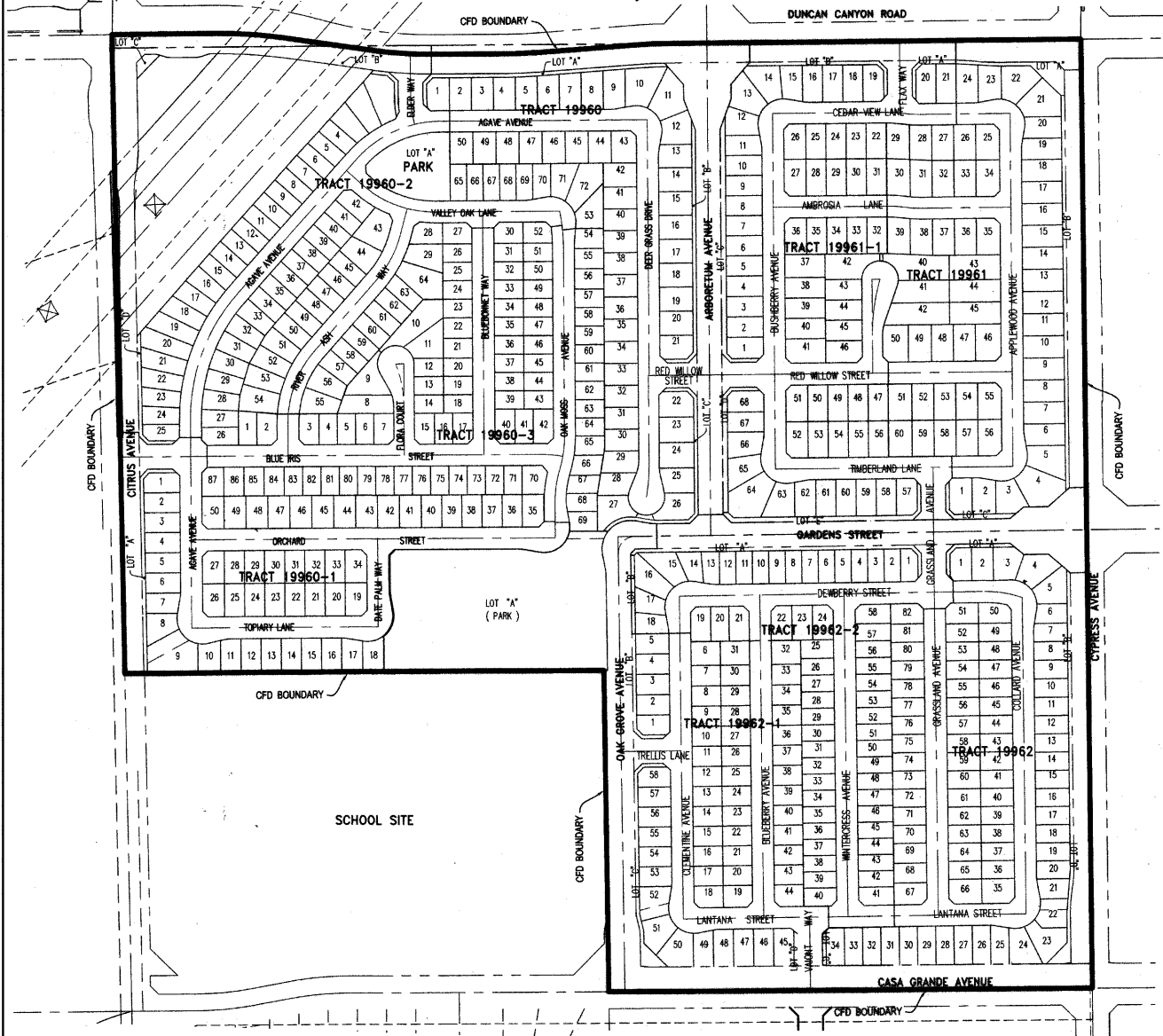


# PROPOSED BOUNDARIES OF CITY OF FONTANA COMMUNITY FACILITIES DISTRICT NO. 85 (THE MEADOWS) COUNTY OF SAN BERNARDINO, STATE OF CALIFORNIA



## CITY CLERK'S CERTIFICATE

FILED IN THE OFFICE OF THE CITY CLERK OF THE CITY OF FONTANA  
THIS 18<sup>TH</sup> DAY OF September, 2018.

*Tommy Lewis*  
CITY CLERK OF THE CITY OF FONTANA

I HEREBY CERTIFY THAT THE WITHIN MAP SHOWING THE PROPOSED BOUNDARIES OF CITY OF FONTANA COMMUNITY FACILITIES DISTRICT NO. 85 (THE MEADOWS), COUNTY OF SAN BERNARDINO, STATE OF CALIFORNIA, WAS APPROVED BY THE CITY COUNCIL OF THE CITY OF FONTANA AT A REGULAR MEETING THEREOF HELD ON THE 11<sup>TH</sup> DAY OF Sept, 2018, BY ITS RESOLUTION NO. 2018-17

*Tommy Lewis*  
CITY CLERK OF THE CITY OF FONTANA

## SAN BERNARDINO COUNTY RECORDER'S CERTIFICATE

FILED THIS 19 DAY OF September, 2018, AT THE HOUR OF 2:23 O'CLOCK P.M. IN BOOK 88 OF MAPS OF ASSESSMENT AND COMMUNITY FACILITIES DISTRICTS AT PAGE 9 AND AS INSTRUMENT NO. 2018-055496 IN THE OFFICE OF THE COUNTY RECORDER OF THE COUNTY OF SAN BERNARDINO, STATE OF CALIFORNIA, AT THE REQUEST OF THE CITY OF FONTANA IN THE AMOUNT OF \$ 4.00.

BOB DUTTON, ASSESSOR-RECORDER-CLERK OF THE COUNTY OF SAN BERNARDINO.

*Bob Dutton*  
DEPUTY RECORDER

0 200 400  
SCALE IN FEET

## PROPOSED BOUNDARIES:

THE PROPOSED BOUNDARIES OF CITY OF FONTANA COMMUNITY FACILITIES DISTRICT NO. 85 (THE MEADOWS) CONTAIN ALL OF:

TRACT 19960-1 AS SHOWN ON MAP FILED IN BOOK 350, PAGES 15 THROUGH 19 OF TRACT MAPS, AND TRACT 19960-2 AS SHOWN ON MAP FILED IN BOOK 350, PAGES 20 THROUGH 27 OF TRACT MAPS, AND TRACT 19960-3 AS SHOWN ON MAP FILED IN BOOK 350, PAGES 28 THROUGH 32 OF TRACT MAPS, AND TRACT 19960 AS SHOWN ON MAP FILED IN BOOK 350, PAGES 33 THROUGH 37 OF TRACT MAPS, AND TRACT 19961-1 AS SHOWN ON MAP FILED IN BOOK 350, PAGES 38 THROUGH 42 OF TRACT MAPS, AND TRACT 19961 AS SHOWN ON MAP FILED IN BOOK 350, PAGES 43 THROUGH 47 OF TRACT MAPS, AND TRACT 19962-1 AS SHOWN ON MAP FILED IN BOOK 350, PAGES 48 THROUGH 53 OF TRACT MAPS, AND TRACT 19962-2 AS SHOWN ON MAP FILED IN BOOK 350, PAGES 54 THROUGH 58 OF TRACT MAPS, AND TRACT 19962 AS SHOWN ON MAP FILED IN BOOK 350, PAGES 59 THROUGH 63 OF TRACT MAPS, ALL IN THE OFFICE OF THE COUNTY RECORDER OF THE COUNTY OF SAN BERNARDINO, STATE OF CALIFORNIA.

EXCEPTING THEREFROM THE REMAINDER PARCEL AS SHOWN ON SAID TRACT 19962, AS PER MAP FILED IN BOOK 350, PAGES 59 THROUGH 63 OF TRACT MAPS.

CONTAINING 130.91 ACRES OF LAND, MORE OR LESS. THIS REAL PROPERTY DESCRIPTION WAS PREPARED BY ME OR UNDER MY DIRECTION IN ACCORDANCE WITH THE PROFESSIONAL LAND SURVEYOR'S ACT.

TOGETHER WITH AND TO THE CENTERLINE OF CITRUS AVENUE, HALF WIDTH 40 FEET, FUTURE DUNCAN CANYON ROAD, HALF WIDTH 42 FEET, AND TO THE CENTERLINE OF FUTURE CYPRESS AVENUE, HALF WIDTH 34 FEET, AND TO THE CENTERLINE OF CASA GRANDE DRIVE, HALF WIDTH 34 FEET.

*Anthony Hara*  
ANTHONY HARA, P.L.S. 7635  
EXP. 12/31/18

DATE 9/7/18



**PROPOSED BOUNDARIES OF CITY OF FONTANA COMMUNITY FACILITIES DISTRICT  
NO. 85 (THE MEADOWS), COUNTY OF SAN BERNARDINO, STATE OF CALIFORNIA**



9802 PITTSBURGH AVE. SUITE 200  
RANCHO CUCAMONGA, CA. 91730  
PHONE: 909.481.6322  
FAX: 909.481.6320

SHEET

1 OF 1

Recorded to Official Records,  
County of San Bernardino  
Book: 2018-086586  
9/19/2018 2:23 PM