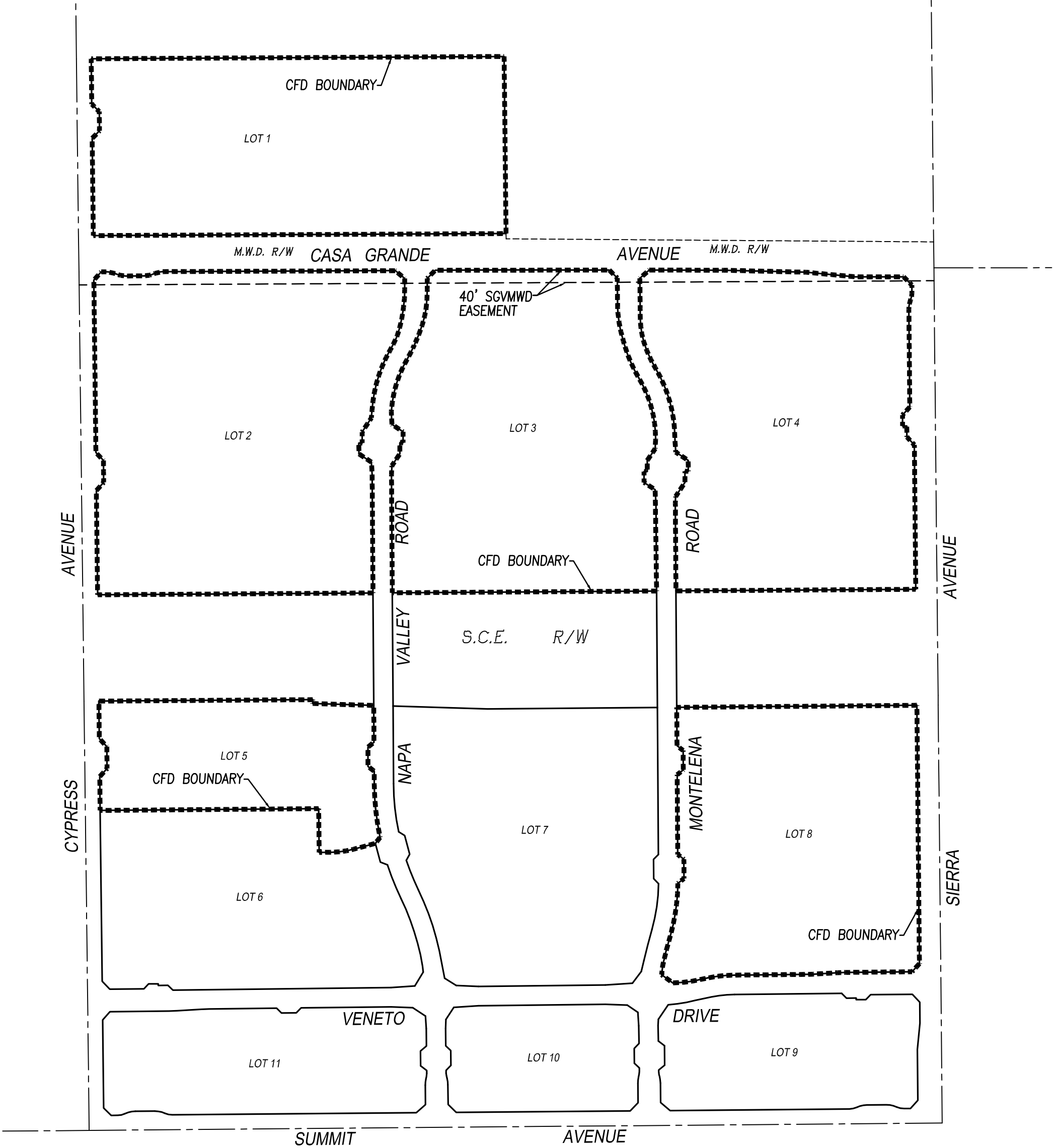


PROPOSED BOUNDARIES OF CITY OF FONTANA COMMUNITY FACILITIES DISTRICT NO. 90 (SUMMIT AT ROSENA PHASE ONE)
COUNTY OF SAN BERNARDINO, STATE OF CALIFORNIA.



LEGEND

-----	PROPOSED BOUNDARIES OF CITY OF FONTANA COMMUNITY FACILITIES DISTRICT NO. 90 (SUMMIT AT ROSENA PHASE ONE)
-----	TRACT / LOT LINE

PROPOSED BOUNDARIES:

THE PROPOSED BOUNDARIES OF CITY OF FONTANA COMMUNITY FACILITIES DISTRICT NO. 90 (SUMMIT AT ROSENA PHASE ONE) CONTAINS 92.047 ACRES OF LAND MORE OR LESS.

REFERENCE IS HEREBY MADE TO TRACT NO. 20153 FILED IN BOOK 352 OF TRACT MAPS AT PAGE 17 THROUGH 25, AND RECORDED AS DOCUMENT NO. 2018-0477159, FOR A DESCRIPTION OF THE LINES AND DIMENSIONS OF THE PARCELS LISTED BELOW.

THE PROPOSED BOUNDARIES OF CITY OF FONTANA COMMUNITY FACILITIES DISTRICT NO. 90 (SUMMIT AT ROSENA PHASE ONE) CONTAINS LOTS 1, 2, 3, 4, 5, AND 8 OF TRACT NO. 20153.

BASIS OF BEARINGS:

THE EAST LINE OF THE SE 1/4 OF SECTION 19, ALSO BEING THE CENTERLINE OF SIERRA AVE., PER PM NO. 19431, PMB 242/97-98. BEING: N00°33'32"W

CITY CLERK'S CERTIFICATE:

FILED IN THE OFFICE OF THE CITY CLERK OF THE CITY OF FONTANA THIS _____ DAY OF _____, 2019.

CITY CLERK OF THE CITY OF FONTANA

I HEREBY CERTIFY THAT THE WITHIN MAP SHOWING THE PROPOSED BOUNDARIES OF CITY OF FONTANA COMMUNITY FACILITIES DISTRICT NO. 90 (SUMMIT AT ROSENA PHASE ONE), COUNTY OF SAN BERNARDINO, STATE OF CALIFORNIA, WAS APPROVED BY THE CITY COUNCIL OF THE CITY OF FONTANA AT A REGULAR MEETING THEREOF, HELD ON THE ____ DAY OF _____, 2019, BY ITS RESOLUTION NO. _____

CITY CLERK OF THE CITY OF FONTANA

SAN BERNARDINO COUNTY RECORDER'S CERTIFICATE:

FILED THIS _____ DAY OF _____, 2019, AT THE HOUR OF _____ O'CLOCK ____M IN BOOK _____ OF MAPS OF ASSESSMENT AND COMMUNITY FACILITIES DISTRICTS AT PAGE _____, AND AS INSTRUMENT NO. 2019-_____ IN THE OFFICE OF THE COUNTY RECORDER IN THE COUNTY OF SAN BERNARDINO, STATE OF CALIFORNIA, AT THE REQUEST OF THE CITY OF FONTANA IN THE AMOUNT OF \$ _____.

BOB DUTTON, ASSESSOR-RECORDER-COUNTY CLERK
COUNTY OF SAN BERNARDINO

BY: _____
DEPUTY RECORDER

