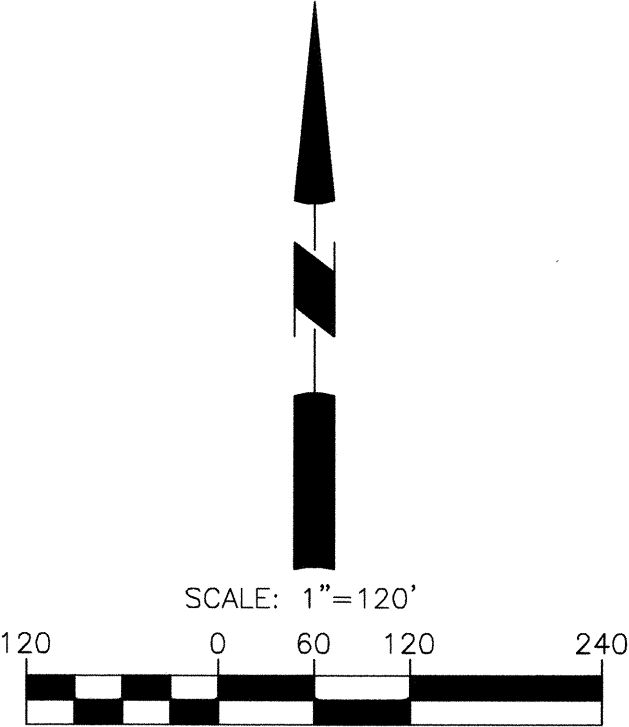
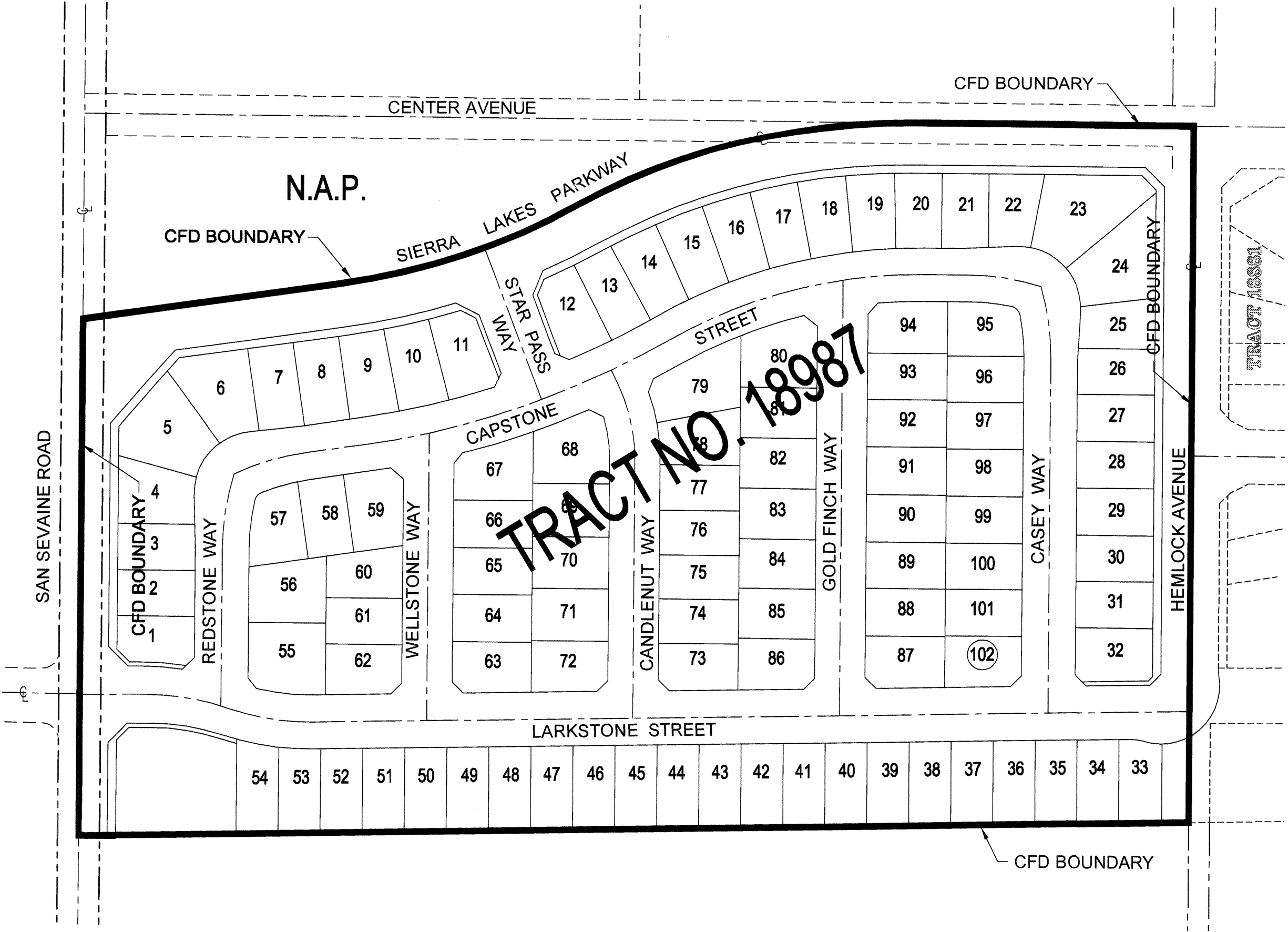


PROPOSED BOUNDARIES OF CITY OF FONTANA COMMUNITY FACILITIES DISTRICT NO. 86 (ETIWANDA RIDGE)
COUNTY OF SAN BERNARDINO, STATE OF CALIFORNIA.



BASIS OF BEARINGS:

THE SOUTH LINE OF THE NE 1/4 OF SECTION 26, T1N, R6W, S.B.M. PER RECORD OF SURVEY 88/36-42, BEING: N 89°37'36" E

CITY CLERK'S CERTIFICATE:

FILED IN THE OFFICE OF THE CITY CLERK OF THE CITY OF FONTANA THIS 1st DAY OF May, 2018.

Tonia Duse
CITY CLERK OF THE CITY OF FONTANA

I HEREBY CERTIFY THAT THE WITHIN MAP SHOWING PROPOSED BOUNDARIES OF CITY OF FONTANA COMMUNITY FACILITIES DISTRICT NO. 86 (ETIWANDA RIDGE), COUNTY OF SAN BERNARDINO, STATE OF CALIFORNIA, WAS APPROVED BY THE CITY COUNCIL OF THE CITY OF FONTANA AT A REGULAR MEETING THEREOF, HELD ON THE 24th DAY OF April, 2018, BY ITS RESOLUTION NO. 2018-022

Tonia Duse
CITY CLERK OF THE CITY OF FONTANA

SAN BERNARDINO COUNTY RECORDER'S CERTIFICATE:

THIS MAP HAS BEEN FILED UNDER DOCUMENT NUMBER 2018-0160238 THIS 2nd DAY OF May, 2018, AT THE HOUR OF 10:47 O'CLOCK A.M. IN BOOK 87 OF MAPS OF ASSESSMENT AND COMMUNITY FACILITIES DISTRICTS AT PAGE 88, IN THE OFFICE OF THE COUNTY RECORDER IN THE COUNTY OF SAN BERNARDINO, STATE OF CALIFORNIA, AT THE REQUEST OF THE CITY OF FONTANA IN THE AMOUNT OF \$ 9.00

BOB DUTTON, ASSESSOR-RECORDER
COUNTY OF SAN BERNARDINO

BY: *Nicole Lurie*
DEPUTY RECORDER

Recorded in Official Records,
County of San Bernardino
Doc#: 2018-0160238
5/02/2018 10:47 AM

PROPOSED BOUNDARIES:

THE PROPOSED BOUNDARIES OF CITY OF FONTANA COMMUNITY FACILITIES DISTRICT NO. 86 (ETIWANDA RIDGE) CONTAIN ALL OF TRACT 18987 AS SHOWN ON THE MAP FILED IN BOOK 349 OF TRACT MAPS, AT PAGES 85 THROUGH 88, IN THE OFFICE OF THE COUNTY RECORDER OF THE COUNTY OF SAN BERNARDINO, STATE OF CALIFORNIA.

CONTAINS 22.71 ACRES OF LAND MORE OR LESS.

THIS REAL PROPERTY DESCRIPTION WAS PREPARED BY ME IN ACCORDANCE WITH THE PROFESSIONAL LAND SURVEYOR'S ACT.

David B. Warren 4/26/18
DAVID B. WARREN, LS 8244 DATE
EXPIRES 12/31/2019

