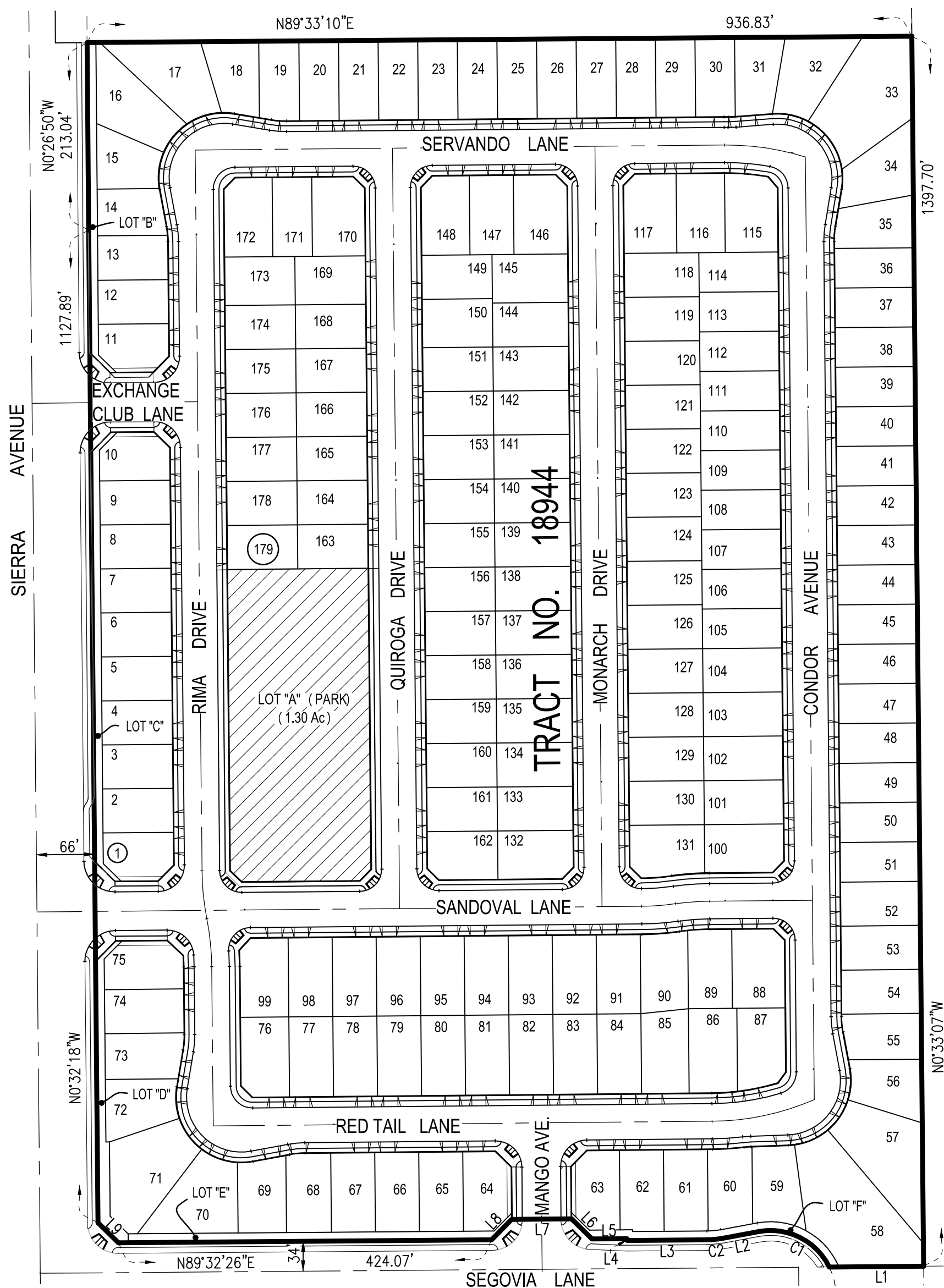


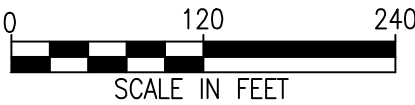
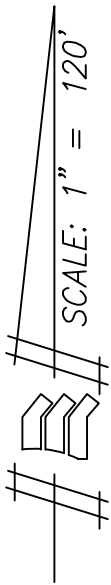
PROPOSED BOUNDARIES OF CITY OF FONTANA  
COMMUNITY FACILITIES DISTRICT NO. 88 (SIERRA CREST II),  
COUNTY OF SAN BERNARDINO, STATE OF CALIFORNIA



LEGEND

PROPOSED BOUNDARIES OF CITY  
OF FONTANA COMMUNITY  
FACILITIES DISTRICT NO. 88  
(SIERRA CREST II)

TRACT/LOT LINE



LINE TABLE		
LINE	BEARING	LENGTH
L1	N89°32'26"E	107.22'
L2	N79°32'24"E	42.36'
L3	N89°32'26"E	90.59'
L4	N00°27'34"W	2.00'
L5	N89°32'26"E	40.00'
L6	N45°29'44"W	32.55'
L7	N89°32'26"E	68.00'
L8	N44°31'59"E	32.53'
L9	N45°29'56"W	32.50'

CURVE TABLE				
CURVE	DELTA	RADIUS	LENGTH	TANGENT
C1	74°22'43"	74.00	96.06	56.15
C2	10°00'02"	100.00	17.45	8.75

CITY CLERK'S CERTIFICATE

FILED IN THE OFFICE OF THE CITY CLERK OF THE CITY OF FONTANA  
THIS \_\_\_\_\_ DAY OF \_\_\_\_\_, 2019.

CITY CLERK OF THE CITY OF FONTANA

I HEREBY CERTIFY THAT THE WITHIN MAP SHOWING THE PROPOSED BOUNDARIES  
OF CITY OF FONTANA COMMUNITY FACILITIES DISTRICT NO. 88 (SIERRA CREST II),  
COUNTY OF SAN BERNARDINO, STATE OF CALIFORNIA, WAS APPROVED BY THE CITY  
COUNCIL OF THE CITY OF FONTANA AT A REGULAR MEETING  
THEREOF, HELD ON THE \_\_\_\_TH DAY OF \_\_\_\_\_, 2019, BY ITS RESOLUTION  
NO. \_\_\_\_\_.

CITY CLERK OF THE CITY OF FONTANA

SAN BERNARDINO COUNTY RECORDER'S CERTIFICATE

FILED THIS \_\_\_\_\_ DAY OF \_\_\_\_\_, 2019, AT THE HOUR OF \_\_\_\_ O'CLOCK  
\_\_\_\_ M. IN BOOK \_\_\_\_\_ OF MAPS OF ASSESSMENT AND COMMUNITY FACILITIES  
DISTRICTS AT PAGE \_\_\_\_\_, AND AS INSTRUMENT NO. 2019- \_\_\_\_\_  
IN THE OFFICE OF THE COUNTY RECORDER OF THE COUNTY OF SAN BERNARDINO,  
STATE OF CALIFORNIA, AT THE REQUEST OF THE CITY OF FONTANA IN THE  
AMOUNT OF \$ \_\_\_\_\_.

BOB DUTTON, ASSESSOR-RECORDER-COUNTY CLERK  
OF THE COUNTY OF SAN BERNARDINO

DEPUTY

BASIS OF BEARINGS

THE BEARING OF N00°35'43"W ALONG THE CENTERLINE OF SIERRA  
AVENUE, AS SHOWN ON TRACT No. 18820 M.B. 338/66-69, WAS  
USED AS THE BASIS OF BEARINGS FOR THIS MAP.

PROPOSED BOUNDARIES:

THE PROPOSED BOUNDARIES OF CITY OF FONTANA COMMUNITY FACILITIES  
DISTRICT NO. 88 (SIERRA CREST II) CONTAIN ALL OF TRACT 18944 AS SHOWN ON  
MAP FILED IN BOOK 351 OF TRACT MAPS, AT PAGES 65 THROUGH 69,  
IN THE OFFICE OF THE COUNTY RECORDER OF THE COUNTY OF SAN BERNARDINO,  
STATE OF CALIFORNIA, EXCEPTING THEREFROM THE REMAINDER PARCEL.

CONTAINING 29.38 ACRES OF LAND, MORE OR LESS.

THIS REAL PROPERTY DESCRIPTION WAS PREPARED BY ME OR UNDER MY  
DIRECTION IN ACCORDANCE WITH THE PROFESSIONAL LAND SURVEYOR'S ACT.

\_\_\_\_\_  
DATE

ANTHONY HARO, P.L.S. 7635  
EXP. 12/31/20



PROPOSED BOUNDARIES OF CITY OF FONTANA COMMUNITY FACILITIES DISTRICT  
NO. 88 (SIERRA CREST II), COUNTY OF SAN BERNARDINO, STATE OF CALIFORNIA



9302 PITTSBURGH AVE., SUITE 230  
RANCHO CUCAMONGA, CA. 91730  
PHONE: 909.481.6322  
FAX: 909.481.6320

SHEET

1 OF 1